

VACATION CHECK

台北樂客商旅 LOOK HOTEL TAIPEI

台北市襄陽路8號 ; No.8, Xiangyang Road, Taipei, Taiwan
Phone: : 8862- 2370 9988 , Fax : 8862-2370 9928

NOV ~ 30 DEC'11

R.O.H. :	SUN – THU	SGL / TWN	HK\$ 730 INCL ABF
	FRI – SAT	SGL / TWN	HK\$ 810 INCL ABF
PRESITIGE RM :	SUN – THU	SGL / TWN	HK\$ 760 INCL ABF
	FRI– SAT	SGL / TWN	HK\$ 850 INCL ABF
DELUXE RM :	SUN – THU	SGL / DBL	HK\$ 810 INCL ABF
	FRI – SAT	SGL / DBL	HK\$ 890 INCL ABF
GRAND RM :	SUN – THU	TWN	HK\$ 810 INCL ABF
	FRI – SAT	TWN	HK\$ 890 INCL ABF

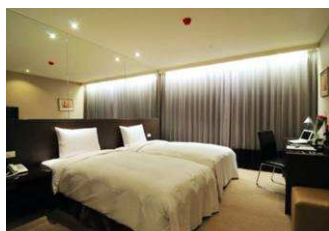
- ABOVE RATES ARE STRICTLY MAXIMUM FOR 2 PAX ONLY, IF MORE THAN 2 PAX STAY AT ONE ROOM, PLEASE INFORM OUR STAFF FOR RATES.



STANDARD ROOM



PRESITIGE ROOM



DELUXE ROOM



GRAND ROOM



酒店位置 Location:

- ~ Located between Ximending and Taipei Main Station, just 2 minutes on foot from NTU Hospital Station, 1 stop to Taipei Main Station. 7 minutes on foot from Ximen Station.

設施 Facilities:

- ~ Air conditioned room with LCD TV and free internet.
- ~ Laundry service, elevator, free WiFi in public area